

Ran

Catalog Number: 26020

Gene Symbol: RAN

Description: Anti-Ran Mouse Monoclonal Antibody

Background: Ran (Ras-related nuclear protein) is a member of the Ras-superfamily GTPases. Ran is involved in the transport of proteins across the nuclear envelope, as well as in microtubule organization during mitosis.

Immunogen: Recombinant full length protein of Ran

Tested Applications: ELISA, WB, IP, IHC

Recommended Dilutions:

ELISA: 1:1000-1:5000

WB: 1:100-1:2000

IP: 1 µg for 1~2 mg total cellular proteins

IHC: 1:100 dilution

Concentration: 1 mg/ml

Host: Mouse

Clonality: Monoclonal

Isotype: IgG

Purity: Purified from ascites

Format: Liquid

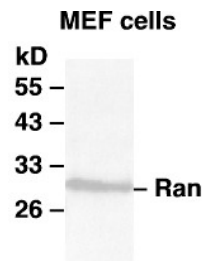
Preservative: No

Constituents: PBS (without Mg²⁺ and Ca²⁺), pH 7.4, 150 mM NaCl, 50% glycerol

Species Reactivity: Anti-Ran antibody recognizes Ran of vertebrates.

Storage Conditions: Store at -20°C. Avoid freeze / thaw cycles

Western blot:



WB: anti-Ran mAb

Western blot analysis of Ran proteins.

Whole-cell lysate of MEF cells was used for western blots with the monoclonal anti-Ran antibody (Cat. # 26020).

FOR RESEARCH USE ONLY. NOT FOR DIAGNOSTIC APPLICATIONS

NewEast Biosciences
1150 First Avenue, Suite 501
King of Prussia, PA 19406

Support:

610-945-2007

info@neweastbio.com

Web:

www.neweastbio.com